

FOR LEASE

BUILDING C



NEW BUILD MEDICAL / OFFICE CONDOMINIUMS

±2,100 - 4,200 Sq. Ft. Medical / Professional

Courtyards at Cobblestone

967 N McQueen Road | Chandler, Arizona 85225

Presented by

JOHN QUATRINI

Associate Broker

C 602 859 0506

john@shellcommercial.com

SUZANNE ENRIGHT

Senior Associate

C 602 471 2981

suzanne@shellcommercial.com

Shell Commercial Investment Real Estate

O 480 443 3992

F 480 443 3680

www.shellcommercial.com

16410 N 91st Street | Suite 112 | Scottsdale, AZ 85260

The above is subject to prior sales and leasing. This information has been secured from sources we believe to be reliable, but we make no representation or warranties, expressed or implied as to the accuracy of this information.

Courtyards at Cobblestone

967 N McQueen Road | Chandler, Arizona 85225

BUILDING C

PROPERTY OVERVIEW:

Medical & Professional Office Condominium
project fronting McQueen Road

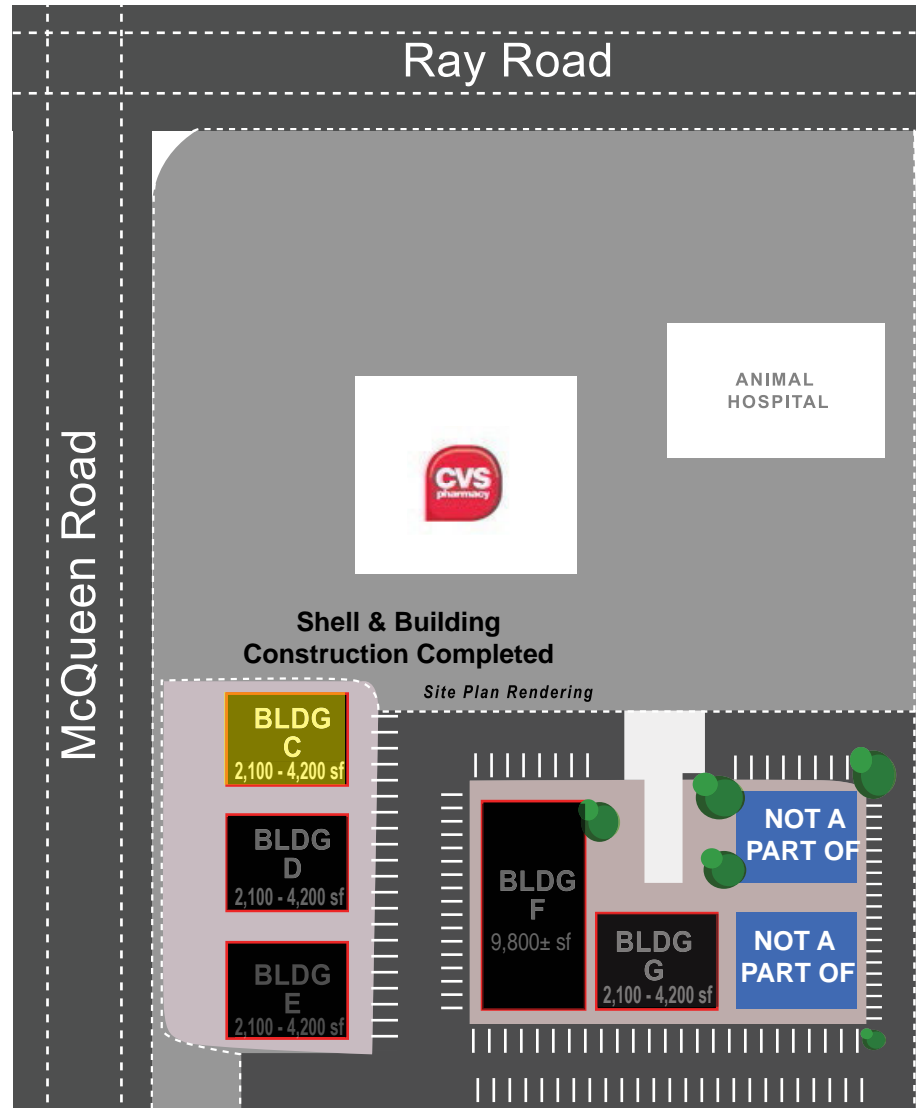
- LEASE RATE: \$23/SF/YR NNN
- TI ALLOWANCE: \$75/SF

PROPERTY DETAILS:

- Five (5) new build office condominiums
- Onsite improvements of: Paved driveway, landscaped streets, parking lot and exterior lighting
- PAD Zoning - City of Chandler
- High traffic exposure | ±53,500 cars/day

LOCATION OVERVIEW:

- Located just south of the SEC of Ray & McQueen Roads in Chandler, Arizona.
- Courtyards at Cobblestone consist of 5 freestanding new build office condos (4 - 2,100 to 4,200± and 1 - 9,800± sf building)



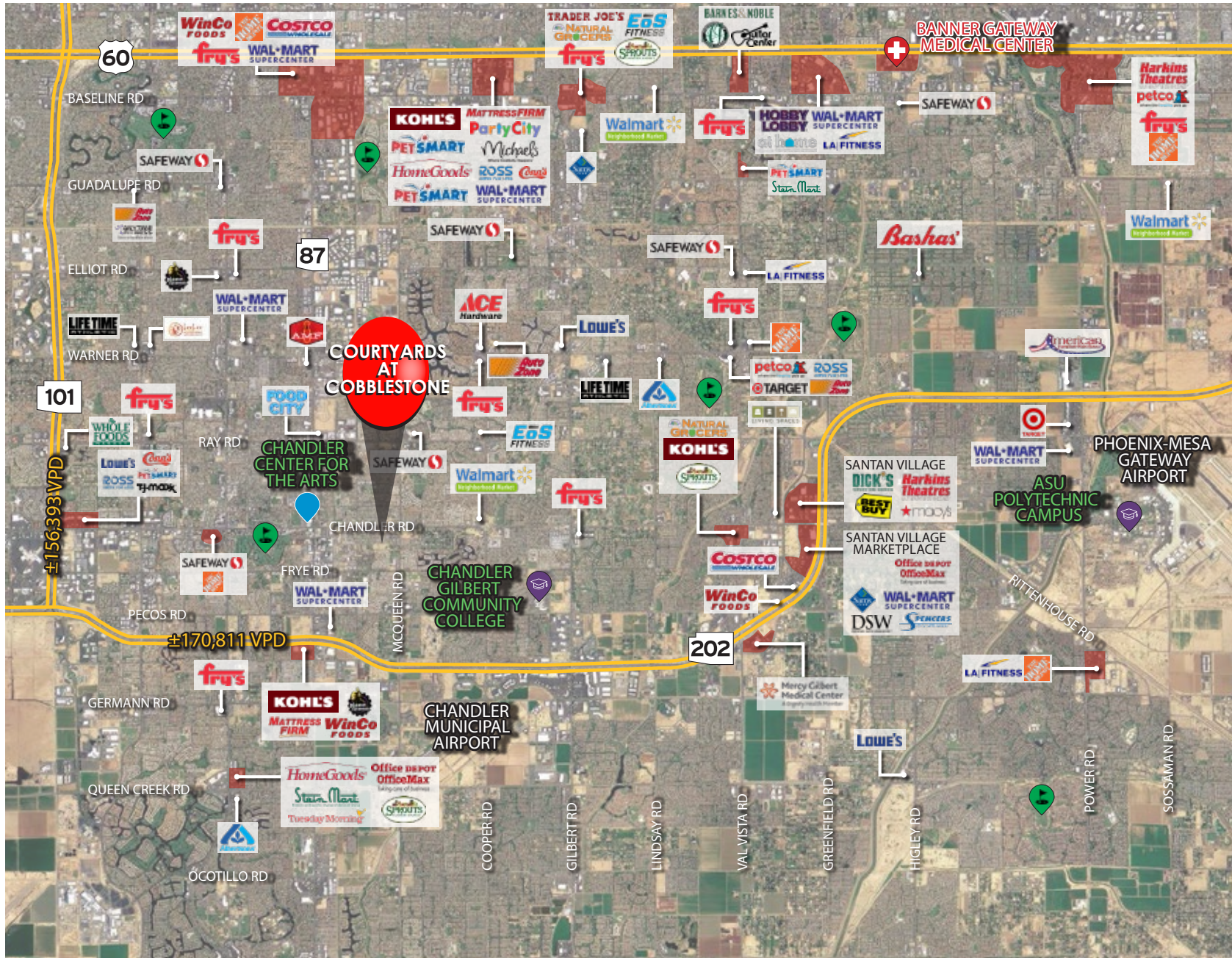
JOHN QUATRINI
Associate Broker
C 602 859 0506
john@shellcommercial.com

SUZANNE ENRIGHT
Senior Associate
C 602 471 2981
suzanne@shellcommercial.com



Courtyards at Cobblestone - Building C

967 N McQueen Road | Chandler, Arizona 85225



The above is subject to prior sales and leasing. This information has been secured from sources we believe to be reliable, but we make no representation or warranties, expressed or implied as to the accuracy of this information.

Courtyards at Cobblestone - Building C

967 N McQueen Road | Chandler, Arizona 85225

DEMOGRAPHICS*

3-Mile Radius

Population

2018: 134,208
2023 Projected Increase: 6.44%
Average Age: 35.50

Households

2018: 47,929
2023 Projected Growth: 6.43%
Average Household Size: 2.80

Housing

Median Home Value: \$243,800
Median Year Built: 1992

*Based on CoStar information accessed January 2019



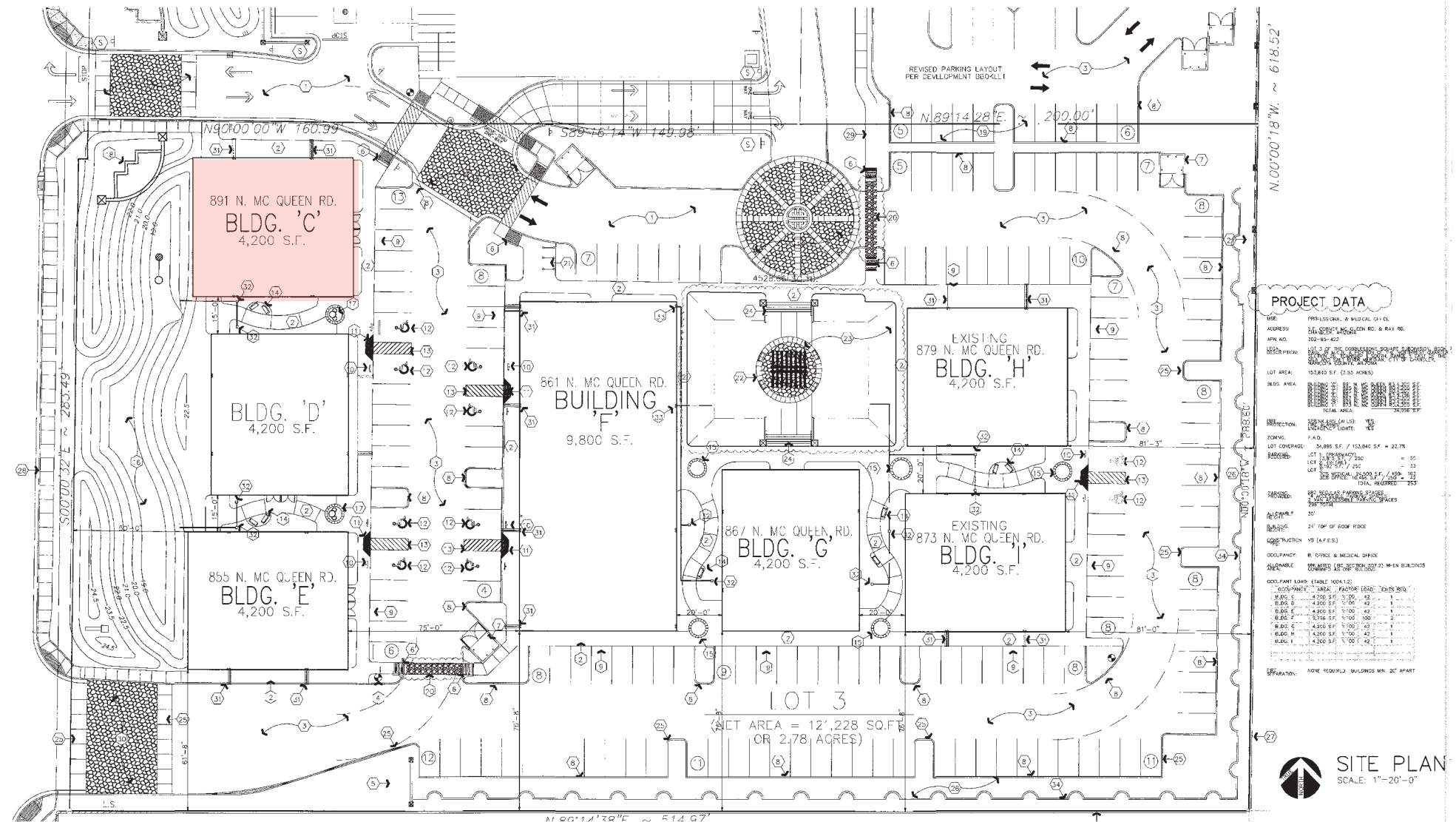
JOHN QUATRINI
Associate Broker
C 602 859 0506
john@shellcommercial.com

SUZANNE ENRIGHT
Senior Associate
C 602 471 2981
suzanne@shellcommercial.com



967 N McQueen Road | Chandler, Arizona 85225

967 N McQueen Road | Chandler, Arizona 85225



The above is subject to prior sales and leasing. This information has been secured from sources we believe to be reliable, but we make no representation or warranties, expressed or implied as to the accuracy of this information.